

CMC Controller™

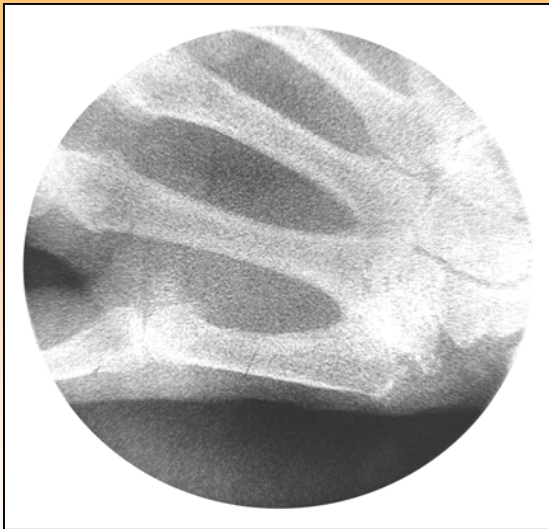
Patents Pending



The CMC Controller places the thumb in the optimum position by simultaneously abducting the thumb and distracting (seating) the CMC Joint

- Low profile allows normal motion of the thumb while supporting the CMC joint.
- 3 sizes minimize inventory (no rights or lefts)

Item#	Size	Wrist Circumference	Fits
5668-01	XS/SM	4"-6.5"	Fits petite women
5668-02	ML	6.5"-11"	Fits medium and large women, most men
08-1452-592	XL	6.5"-11"	Fits larger hands with longer thumb strap



No Brace

Fluoroscan

Female, Age 70



Brace with CMC Controller™

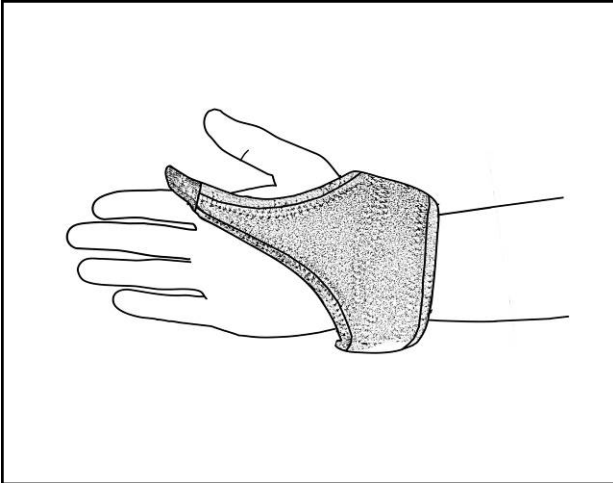
Condition: CMC Arthritis

CMC Controller

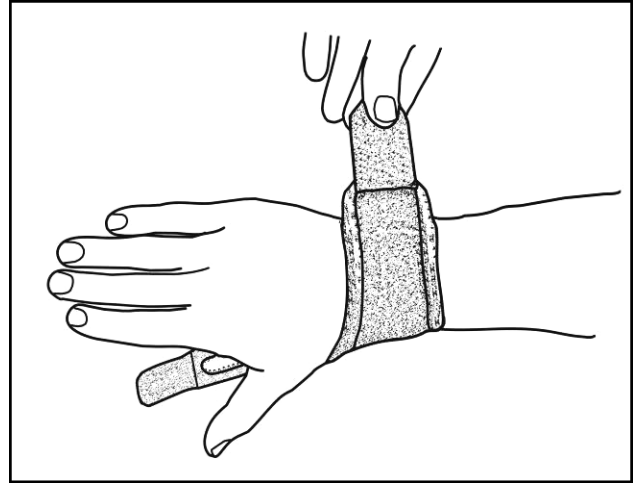
Application Instructions and Warnings: Please Read

Caution: Prior to application, please read this instruction carefully and thoroughly. Through proper application you will obtain the maximum performance of your brace.

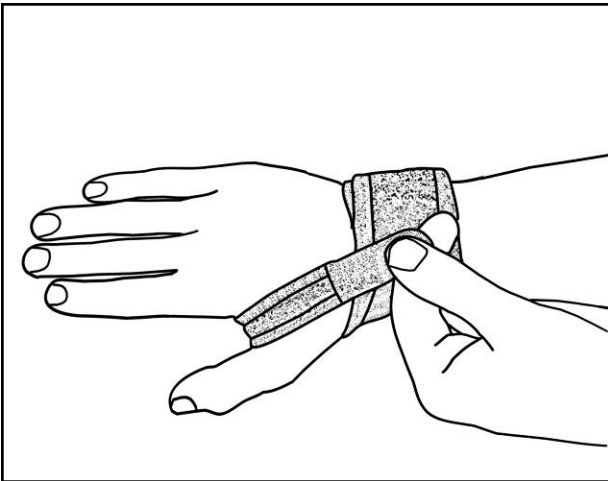
Warnings: Hand wash using a mild detergent and thoroughly rinse this brace. Please AIR DRY only. This device is not intended to prevent or eliminate the risk of injury. This device is designed for single patient usage. If you experience swelling, pain or skin irritation while the brace is on, immediately remove the brace and consult your prescribing practitioner.



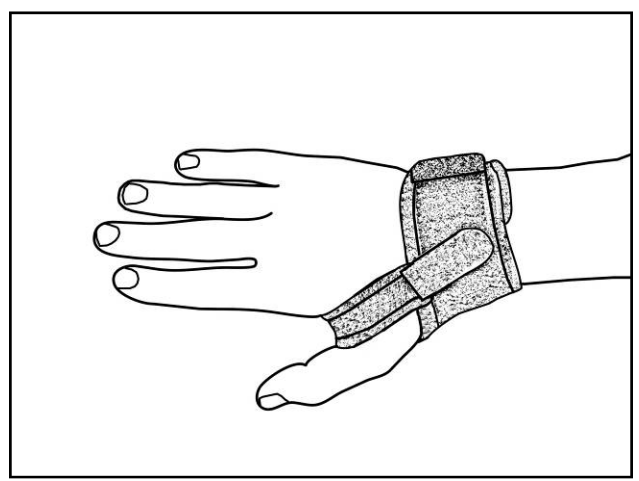
1. Align thumb strap over web space (thenar eminence).



2. Secure base around wrist.



3. Pull thumb strap through web space, and attach to main body.



4. Finished Application